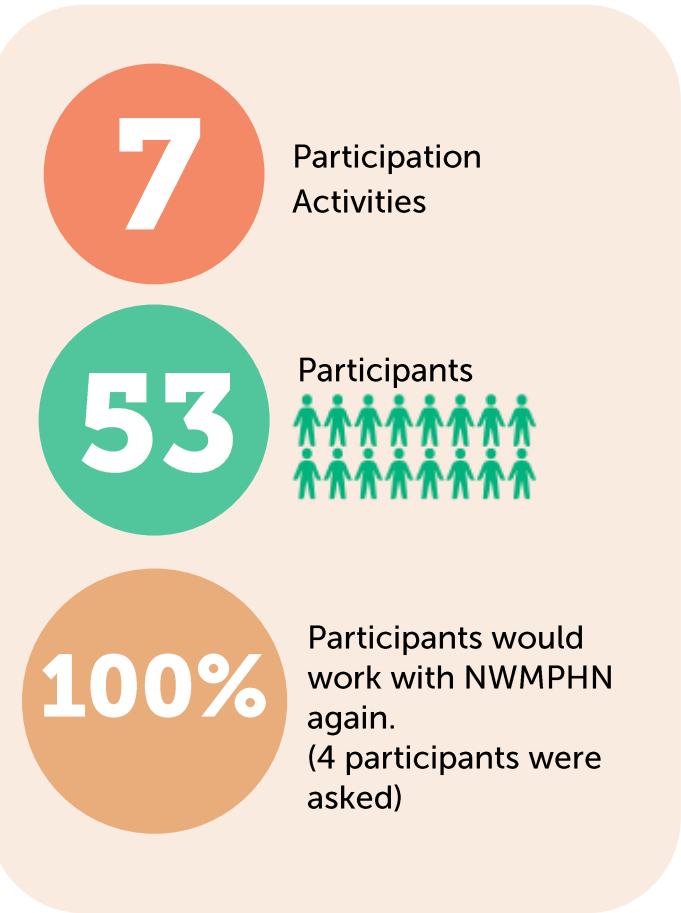


# COMMUNITY PARTICIPATION

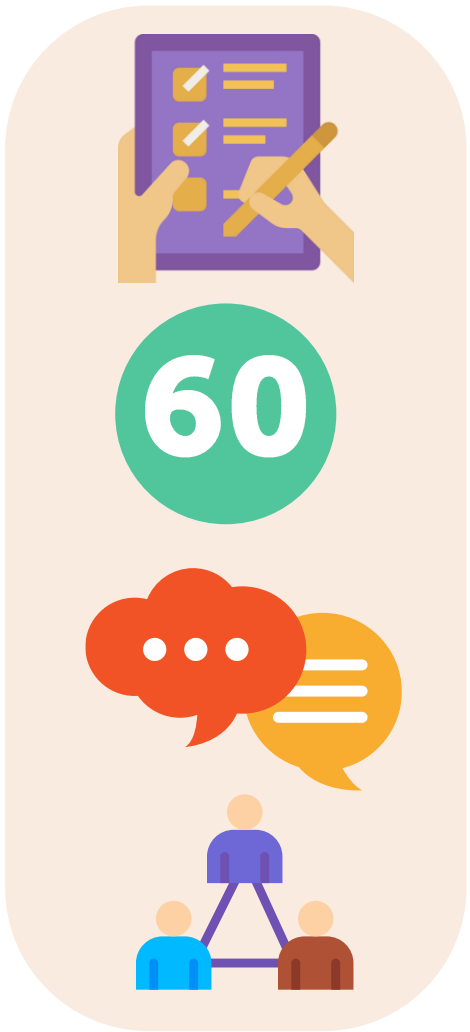
This 6 monthly report provides an overview of how NWMPHN is tracking with activities in our Community Participation Plan 2024 – 2026.  
Published: July 2024.

## Community Participation Activities



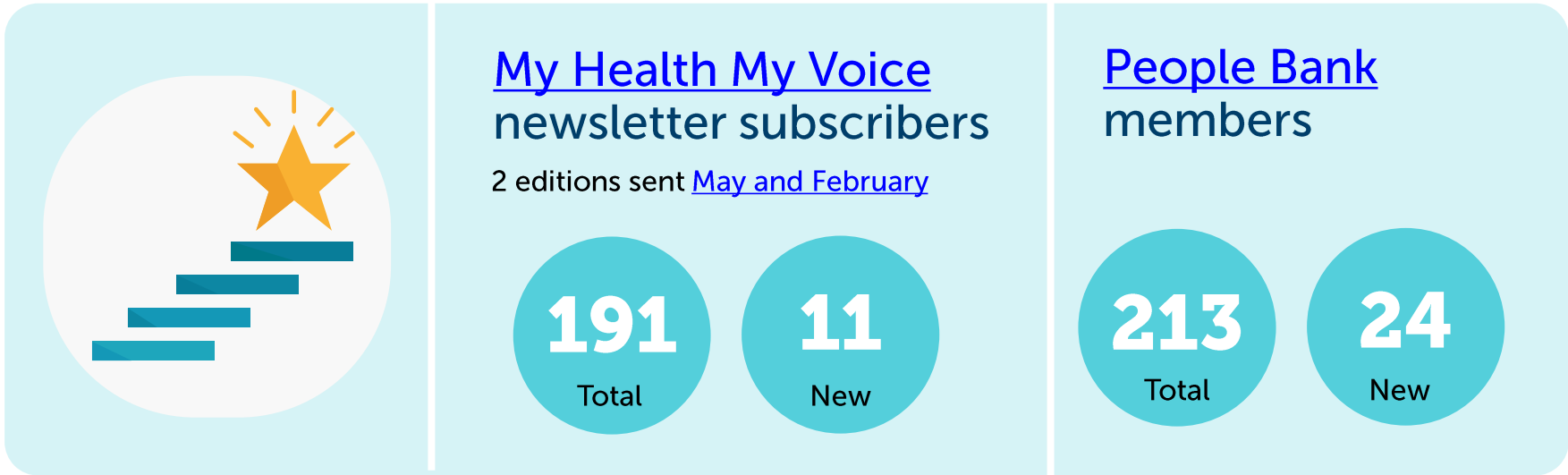
### Reasons for engagement

- To understand the barriers [multicultural communities](#) face accessing [primary care](#).
- To design training for health professionals (asthma management and providing culturally responsive care in mental health).
- To seek guidance and governance for our suicide prevention and eating disorder projects.
- To seek feedback on our [mental health resources](#).
- To understand attitudes and experiences to using mental health digital tools.



### Achievements

- A community participation decision support tool has been developed to help NWMPHN staff determine when it is appropriate to engage with community in their work.
- 60 NWMPHN staff have completed [IAP2 Essentials in Engagement](#) training and 20 completed [IAP2 Facilitate](#) training.
- Internal community participation workshops were conducted with staff to build knowledge of the [Community Participation Plan](#) and the internal resources available to support them to engage with community.
- The [Community Council](#) met in February and May 2024.



# COMMUNITY PARTICIPATION

This 6 monthly report provides an overview of how NWMPHN is tracking with activities in our Community Participation Plan 2024 – 2026.  
Published: July 2024.

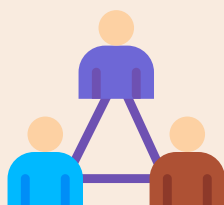
## Spotlight



In April 2024 we held a 2-day workshop attended by 23 community members from a range of cultural backgrounds. They were asked to address the question: “How can we make it easier for people from multicultural Melbourne to get primary health care? Watch the [video](#) and [read more about it](#) on our website.

## Planned Community Participation Activities

### In the next 6 months: July - Dec 2024



- Embedding community participation into our refreshed commissioning process (an internal process we go through to determine what services/activities to fund).
- Forming an internal facilitation group for staff to build their confidence with facilitating meetings and events with community.
- Partnering with Melton City Council to engage with South Sudanese youth as part of our next Health Needs Assessment.
- Partnering with the Victorian Aboriginal Health Service (VAHS) to engage with Aboriginal and Torres Strait Islander communities for the next Health Needs Assessment.

## Community Participation Plan – A snapshot



**Our Vision:**  
Healthy people and a healthy community

### Our Goals

- Building meaningful relationships and trust with our communities.
- Ensuring our programs and services, shaped by our communities, are safe, accessible and sustainable.

Visit our [website](#) to read more about the [Community Participation Plan](#)

### Our Principles

