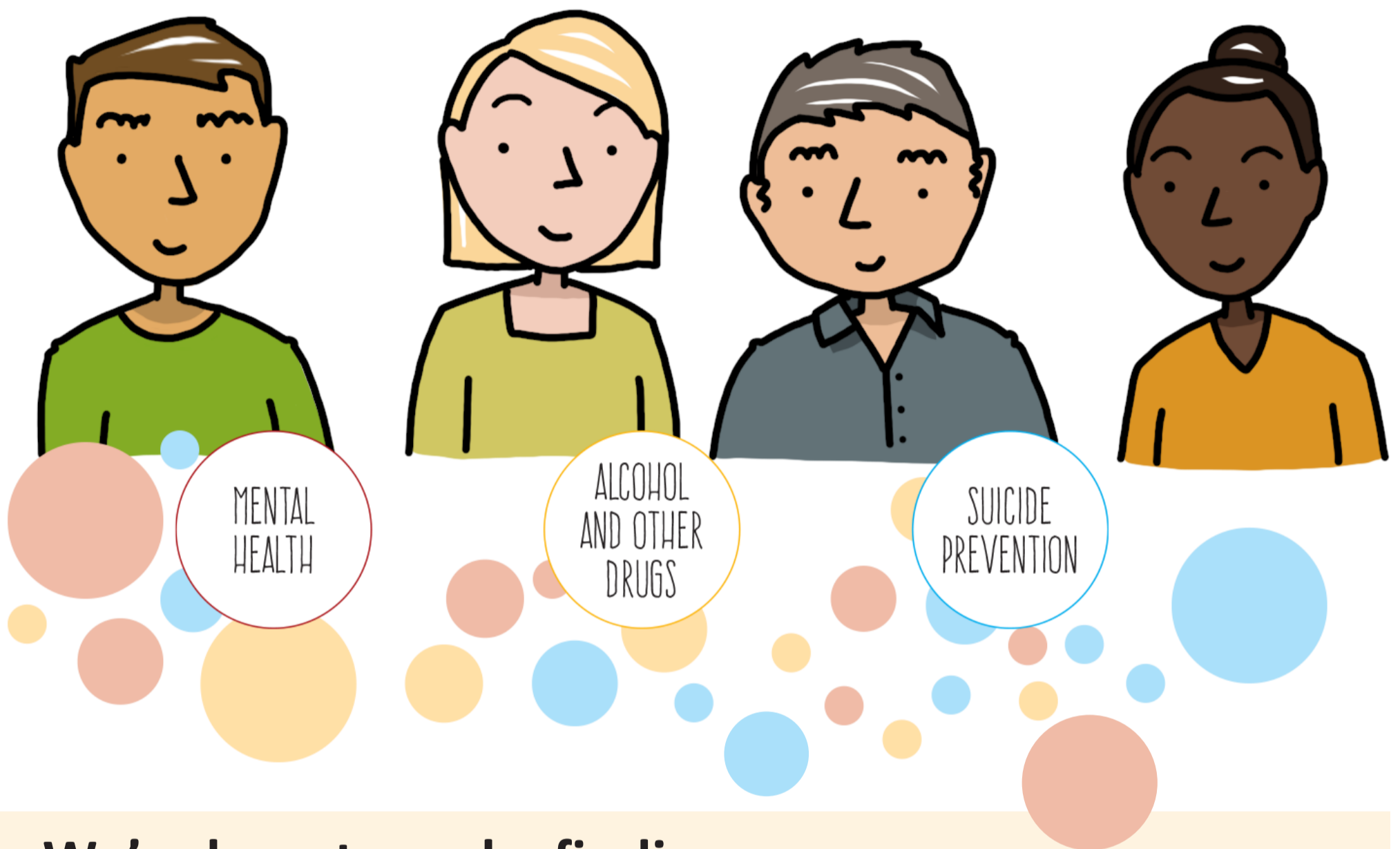


# Finding the right service is easier than ever



**We're here to make finding an appropriate service easier for you – and your patients.**

Victoria's mental health service system is rapidly evolving in response to reform. New local, state and federal services mean referral pathways and options for patients sometimes change. It is easy to miss a detail or refer a patient to a service that may not be right for them.

You can use our single form to refer anyone experiencing mental ill health to our referral and access team. They connect people with the most appropriate services and keep you informed when your patient is allocated to a new one.



Learn more

To find out more visit [nwmphn.org.au/access](http://nwmphn.org.au/access) or call (03) 9088 4277.

**phn**  
NORTH WESTERN  
MELBOURNE

An Australian Government Initiative