

SUPPORTING PRIMARY CARE

WHAT WE'VE LEARNED



PEOPLE LIVING IN
NW MELBOURNE



Want care providers who:

- They can trust
- Are culturally safe
- Consider physical, social and mental health needs
- They can access where and when they need
- Work together and with them.

WE WILL WORK WITH PRIMARY CARE TO:



Undertake data-driven improvement, including a focus on Practice Incentive Program Quality Improvement (PIP QI) measures.



Adopt digital health initiatives.



Provide people with equitable access to COVID-19 care and vaccination in the community.



Collaborate with other primary health care providers and hospital colleagues to ensure an integrated and seamless care journey.



Deliver evidence-based care supporting people to stay well and out of hospital.

OUR ROLE

CAPABILITY BUILDER

Ensuring providers have access to the best education, tools and resources. Promoting primary care as a rewarding career path.

COMMUNICATOR

Delivering timely and relevant localised information to health care providers. Providing evidence-based, accessible information to inform and empower our diverse communities.

CHAMPION

Advocating for primary care as the foundation for a high-performing and sustainable health system.

COMMISSIONER

Commissioning co-designed local and regional solutions – to address service gaps, better integrate health care and ensure equitable access.

COORDINATOR

Fostering strong partnerships and collaborations across local, state and federal governments – between primary health, acute and specialist services.

ACHIEVING A SYSTEM THAT IS:

COMPREHENSIVE

PERSON-CENTRED

COORDINATED

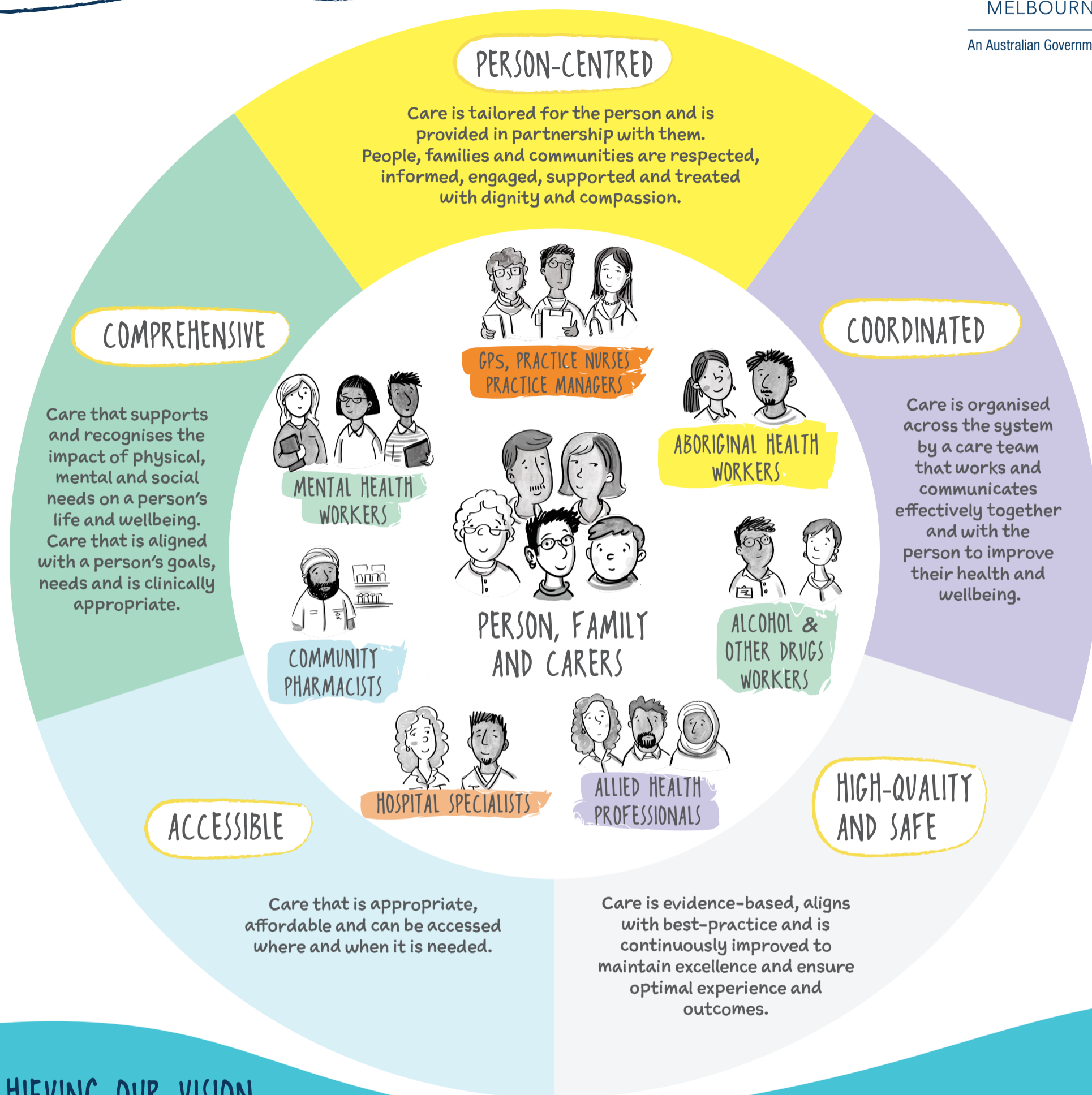
ACCESSIBLE

HIGH-QUALITY & SAFE



FOR MORE INFORMATION,
PLEASE GO TO
[NWMPN.ORG.AU/FOR-PRIMARY-CARE](https://nwmpn.org.au/for-primary-care)

OUR VISION FOR PRIMARY CARE



ACHIEVING OUR VISION

WHAT NEEDS TO CHANGE ACROSS THE AUSTRALIAN HEALTH CARE SYSTEM

Policy and funding reorientated for value-based comprehensive and preventative care.

Cross-sector collaboration between health and social care services for a seamless patient journey and best use of health care resources.

Technology enabled innovations in care delivery, which support improved communication and collaboration between primary care, hospitals and patients.

Strengthened relationships between patients, carers and health care providers to build health literacy and individual agency to stay well, connected and out of hospital.

Supported, empowered and sustainable workforce to operate at the top of their scope within a culture that values interdisciplinary care.