

Our Region

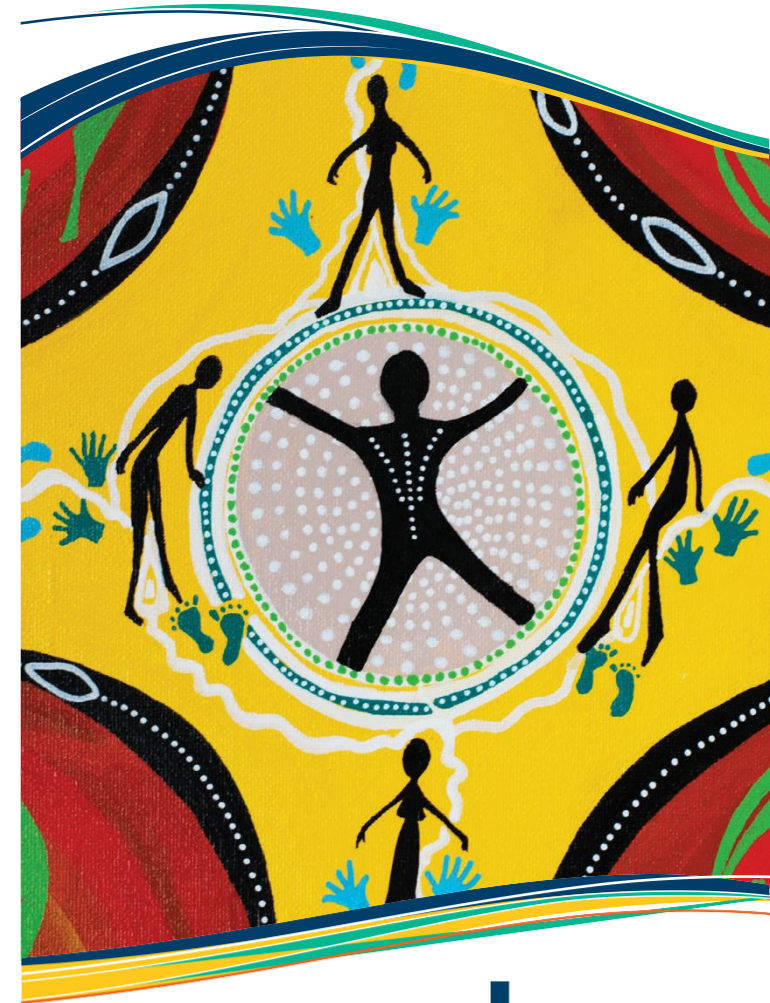
You can access our services if you live within our region which covers 13 local Government areas: Melbourne, Yarra, Moreland, Moonee Valley, Maribyrnong, Hobsons Bay, Wyndham, Brimbank, Melton, Hume, Darebin, Moorabool (part) and Macedon Ranges (part).



We acknowledge the peoples of the Kulin nation as the Traditional Owners of the land on which our work in the community takes place. We pay our respects to their Elders past and present.



The artwork in this brochure was painted by artist Lynette Briggs of the Wiradjuri - Yorta Yorta people. The painting is titled 'Walking Together'.



© MPCN 2016. All rights reserved. RA410A

Primary Health Networks Programme
– An Australian Government Initiative
North Western Melbourne PHN
is operated by Melbourne Primary
Care Network

North Western Melbourne PHN
Level 1, 369 Royal Parade,
Parkville, VIC 3052
(03) 9347 1188
nwmpn.org.au

phn
NORTH WESTERN
MELBOURNE

Care Coordinators

Supporting you to access better health care

Care Coordinators are health professionals who provide assistance and support to Aboriginal and Torres Strait Islander people who have chronic disease.

How can Care Coordinators help you?

Care Coordinators can:

- help you understand your condition and your care plan
- work alongside you and ensure that you are receiving the care you need
- help you access specialists and other health professionals
- guide you in understanding your treatment and medications
- help you manage your appointments as well as with transport to appointments.

...and help to improve your overall health and wellbeing.

Aboriginal Outreach Workers

Navigating the health system

Outreach workers support Aboriginal and Torres Strait Islander people to access health services.

How can Outreach Workers support you?

Outreach workers can:

- go with you to appointments with GPs, specialists, and hospitals
- link you with local experts to help keep you healthy, happy and connected
- provide and support you with information about appropriate healthcare and resources
- ensure that you are registered and have an understanding of the Closing the Gap and other government health programs.
- work with Care Coordinators when required.

...and help you understand the health system and your entitlements.

Like to know more?

Are you of Aboriginal or Torres Strait Islander descent?

Would you like assistance with managing your health conditions?

If you would like to access these services contact North Western Melbourne PHN (NWMPHN) and ask to speak to a member of the Aboriginal Health team on **(03) 9347 1188**.

For more information, visit our website. nwmpnhn.org.au/priority-area-topic/aboriginal-health/

