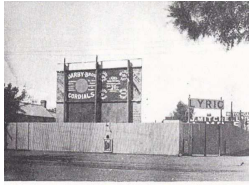


Alcohol and Drug Issues in The Goulburn Valley and BBV Risk, Detection and Action



An early open air theatre which was on the corner of High and Wyndham Sts. Shepparton.

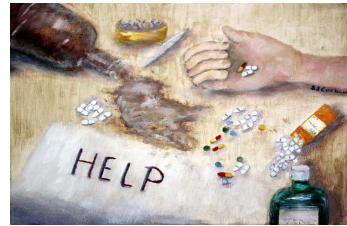
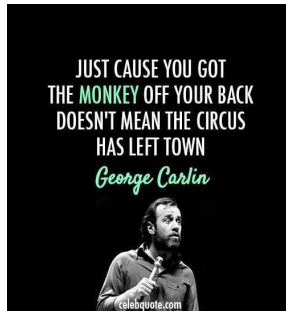


Healthy Communities



I would like to give acknowledgment to the traditional owners, past and present and elders from other communities who may be here today and welcome you all

I would also like to take this opportunity to thank those responsible for todays event and thank them for the invitation to talk to you about Alcohol and Drug use in the community and provide some information on services in the Shepparton area for addressing these issues



Healthy Communities



The National Statistics in relation to Drug Use across the Australian Population

The most startling and interesting results of the survey:

1 in 20 Australians have misused pharmaceuticals in 2016 (4.8) and 3.6 had misused painkiller/opiates including OTC Codeine

Most commonly abused legal drugs are alcohol and tobacco by a huge margin. Most commonly used illegal drugs in the past 12 months were Cannabis (10%), cocaine (2.5%) and ecstasy (2.2%), and methamphetamine (0.8 – 1 %).

When asked what was the drug was of most concern in the community , for the first time Methamphetamine has overtaken excessive drinking of alcohol by 40 % of Australians

Tobacco and Alcohol remain the most widely used drugs and the drugs that cause most harm to the user and the community. However there have been some very positive changes in usage particularly for Youth Alcohol consumption.

In the last year about 8.5 million (or 43 %) of people in Australia over 14 years of age had used an illicit drug in their lifetime (including misuse of pharmaceuticals) , and around 3.1 million (or 15.6 %) had used an illegal drug in the last 12 months, 2.5 million of which had used an illegal drug that was not pharmaceutical (12.6%).



Healthy Communities

Generally, people under 40 have reported a decrease in recent illicit drug usage since 2001, while people 40 or older have reported an increase, particularly in recent years. The largest per cent change was among people aged 60 or older (recent use of any illicit drug increased from 3.9% in 2001 to 6.9% in 2016) followed by people in their 50s (from 6.7% to 11.7%). People aged 60 or older were mainly misusing pharmaceuticals (4.5% in 2016) and people in their 50s were mainly using cannabis (7.2% in 2016).

The average age at which people first tried any illicit drug increased, from 19.3 years in 2013 to 19.7 years in 2016 (Table 27). Between 2013 and 2016, older average ages of first use were reported for cannabis (from 18.5 to 18.7 years), meth/amphetamines (from 21.6 to 22.1 years) and hallucinogens (from 20.0 to 20.4 years).



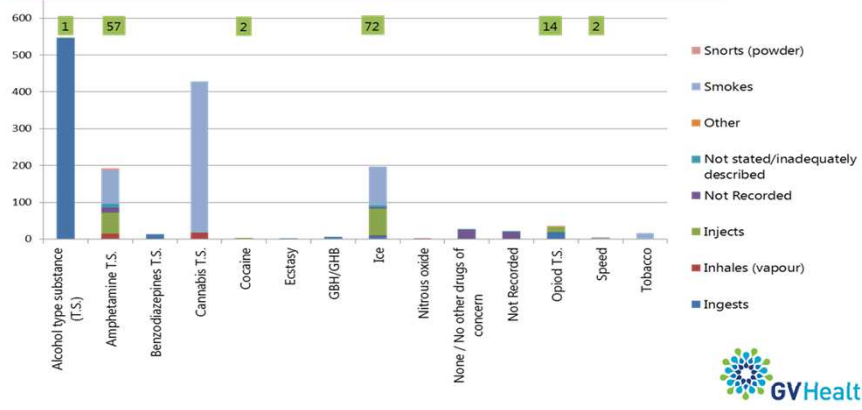
"I have awful trouble with my joints, the cannabis keeps falling out."



Healthy Communities

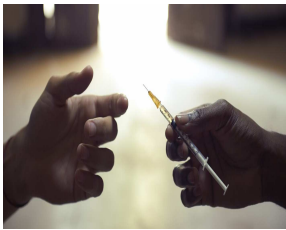
Local Drug Trends / Hume Region

GVADS Principle drug method of use (total 1492): Nov 2014 - Nov 2017



Healthy Communities

BBV and Alcohol and Drug Services



Always use clean gear !!!



Healthy Communities

Every Victorian drug service uses the same [Standardised Comprehensive Assessment](#) tool when accepting new clients. In this assessment you will find that all clients are asked:

- Have you shared equipment in the last four weeks, in the past, or ever ?
- STI's (e.g.. Chlamydia, Gonorrhoea, Herpes) would you like to be tested?
- BBV: have you been tested for Blood borne viruses ? Would you like to be tested for blood borne viruses
- Would you like more information about current treatments (example Hep C) ?

Although it is not mandated it is good practice to undertake the Blood Borne Virus Risk Assessment questionnaire with those that appear at risk, from answer to questions above.

The BBV-TRAQ-SV

The questionnaire is very thorough and is not used regularly, I believe due to the comprehensive assessment taking between 2-3 hours which is a great deal of time to keep a client in a counselling room. Thus it is better targeting its use. Its is also quite educational to intravenous drug users who do not realise how many different ways BBV's can be transmitted, that it is not just a matter of "use your own equipment".

I will provide a number of questions from the 16 and provide a link below to the questionnaire, as I don't have the time in the presentation to go through them all.



Healthy Communities

Item 2. In the last month, how many times have you injected with a needle/syringe after another person has already injected some of its contents?

Item 3. In the last month, how many times have you received an accidental needle-stick/prick from another person's used needle/syringe?

Item 5. In the last month, how many times have you injected a drug that was filtered through another person's filter?

Item 6a. In the last month, how many times have you injected a drug that was prepared in another person's used spoon or mixing container?

Item 6b. On those occasions how often did you clean the spoon or mixing container before using it?

Item 9. In the last month, how many times have you wiped your own injection site with an object (e.g.. swab, tissue, hanky, towel, etc.) which had been used by another person?

Item 12a. In the last month, how many times have you been injected by another person who had already injected or assisted in someone else's injection?

Item 12b. On those occasions, how often did the person injecting you wash their hands before injecting you?

Item 15a. In the last month, how many times has another person touched your injection site (e.g.. to feel for a vein, to wipe away blood, or to stop bleeding)?

Item 15b. On those occasions, how often did the person wash their hands before they touched your injection site?

<http://www.turningpoint.org.au/Media-Centre/centrepubs/Other-Resources-various.aspx>



Healthy Communities

How do I refer to Goulburn Valley Alcohol and Drug Services



The GVADS Withdrawal Team

Phone: 1800 222 582 select option 4
or 03 5823 7974
Mon-Fri 8:30am to 5:00pm

HAD ENOUGH OF YOUR ALCOHOL OR DRUG ADDICTION?

Our Withdrawal Team can support YOU

- We provide a **confidential supportive** service
- First we explore your **readiness** to change
- Then we explore **your needs** & develop a **safe plan**
- **Care and Recovery Coordination, Counselling,**

Therapeutic Day Rehabilitation services can also help
in your recovery and in staying substance free.

ACSO, Intake & Referral (B/H): 1300 022 760
DirectLine - available 24/7: 1800 888 236
Includes counselling
www.directline.org.au



Healthy Communities